



ford.com

VEHICLE DESCRIPTION

SUPER DUTY

2026 F250 SRW 4X4 REG CAB
XL 142" WB STYLESIDE
6.8L DEVCT NA PFI V8 ENGINE
10-SPEED AUTO TORQSHIFT-G

TE D86551

EXTERIOR
OXFORD WHITE
INTERIOR
MEDIUM DARK SLATE VINYL

STANDARD EQUIPMENT INCLUDED AT NO EXTRA CHARGE

EXTERIOR

- DOOR HANDLES - BLACK
- HEADLAMPS - AUTOLAMP (ON/OFF)
- PICKUP BOX TIE DOWN HOOKS
- POWER TAILGATE LOCK
- TOW HOOKS
- TRAILER SWAY CONTROL
- TRAILER TOW MIRRORS
- WIPERS- INTERMITTENT

INTERIOR

- 1TOUCH DWN DR/PASS WINDOW
- 4.2" CLUSTER DISPLAY
- AIR COND, MANUAL FRONT
- CLOTH SUN VISORS
- DRIVER SEAT-MANUAL LUMBAR
- OUTSIDE TEMP DISPLAY
- PARTICULATE AIR FILTER
- POWER LOCKS AND WINDOWS
- STEERING:TILT/TELESCOPE, CRUISE & AUDIO CONTROLS

FUNCTIONAL

- 4-WHEEL ANTILOCK BRAKE SYS
- 5G MODEM
- FORD APP
- HILL START ASSIST
- MANUAL LOCKING HUBS
- MONO BEAM COIL SPRING FRT SUSPENSION W/STAB BAR
- REAR VIEW CAMERA
- REMOTE KEYLESS ENTRY
- SYNC@4 W/8" SCREEN

SAFETY/SECURITY

- ADVANCETRAC™ WITH RSC®
- AIRBAGS - SAFETY CANOPY®
- BELT-MINDER CHIME
- DRIVER/PASSENGER AIR BAGS
- SECURE PKG 1 YR INCLUDED
- SECURILOCK® ANTI-THEFT SYS
- SOS POST-CRASH ALERT SYSTM™
- TIRE PRESSURE MONIT SYS

WARRANTY

- 3YR/36,000 BUMPER / BUMPER
- 5YR/60,000 POWERTRAIN
- 5YR/60,000 ROADSIDE ASSIST
- 5YR/100,000 DIESEL ENGINE

INCLUDED ON THIS VEHICLE

OPTIONAL EQUIPMENT/OTHER

- PREFERRED EQUIPMENT PKG.600A
- 10-SPEED AUTO TORQSHIFT-G
- 3.73 RATIO NON LTD SLIP AXLE
- FRONT LICENSE PLATE BRACKET
- 10300# GVWR PACKAGE
- 50 STATE EMISSIONS
- SPARE TIRE AND WHEEL JACK
- PAYLOAD PACKAGE UPGRADE
- TAILGATE STEP
- CONN PKG: 1 YR INCL W/FORD APP

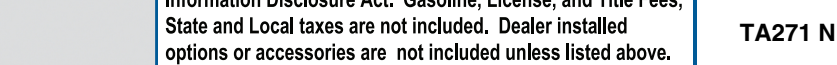
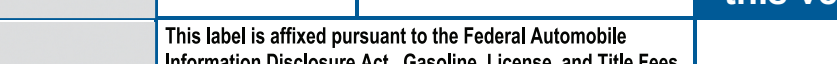
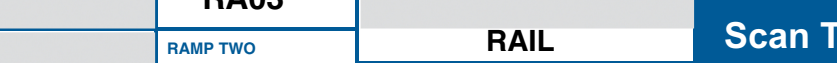
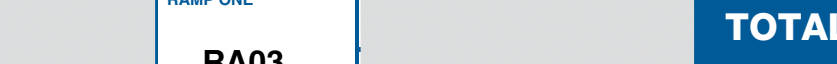
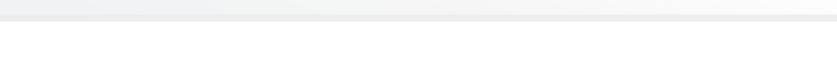
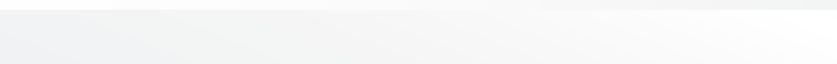
(MSRP)

- NO CHARGE
- NO CHARGE
- NO CHARGE
- NO CHARGE
- NO CHARGE
- NO CHARGE
- 100.00
- 375.00

PRICE INFORMATION

BASE PRICE	\$48,465.00
TOTAL OPTIONS/OTHER	475.00
TOTAL VEHICLE & OPTIONS/OTHER	48,940.00
DESTINATION & DELIVERY	2,595.00

(MSRP)



RAMP ONE

RA03

RAMP TWO

RAIL

ITEM #:

27-Z25L O/T 2

TOTAL MSRP \$51,535.00

Scan The QR Code to get more details about this vehicle



This label is affixed pursuant to the Federal Automobile Information Disclosure Act. Gasoline, License, and Title Fees, State and Local taxes are not included. Dealer installed options or accessories are not included unless listed above.

TA271 N RB 2X 635 003330 01 27 26

California Air Resources Board

Gasoline Vehicle

Environmental Performance

These ratings are not directly comparable to the U.S. EPA/DOT light-duty vehicle label ratings. For information on how to compare, please see www.arb.ca.gov/ep_label.

Protect the environment. Choose vehicles with **higher ratings**:

Greenhouse Gas Rating (tailpipe only)



Smog Rating (tailpipe only)



Vehicle emissions are a primary contributor to climate change and smog. Ratings are determined by the California Air Resources Board based on this vehicle's measured emissions.



The FordPass™ Connect modem is active and sending vehicle data (e.g., diagnostics) to Ford.** See in-vehicle settings for connectivity options.

*Based on 1977-2024 CY total sales. **FordPass Connect (optional on select vehicles), the FordPass App and complimentary Connected Service are required for remote features (see FordPass Terms for details). Connected service and features depend on compatible AT&T network availability. Evolving technology/cellular networks/vehicle capability may limit functionality and prevent operation of connected features. Connected service excludes WI-FI hotspot.



Insist on Ford Protect! The only extended service plan fully backed by Ford and honored at every Ford dealership in the U.S., Canada and Mexico. See your Ford dealer or visit www.FordOwner.com.

WARNING: Operating, servicing and maintaining a passenger vehicle, pickup truck, van, or off-road vehicle can expose you to chemicals including engine exhaust, carbon monoxide, phthalates, and lead, which are known to the State of California to cause cancer and birth defects or other reproductive harm. To minimize exposure, avoid breathing exhaust, do not idle the engine except as necessary, service your vehicle in a well-ventilated area and wear gloves or wash your hands frequently when servicing your vehicle. For more information go to www.P65Warnings.ca.gov/passenger-vehicle.



Credit

Get Prequalified now at www.ford.com/finance