
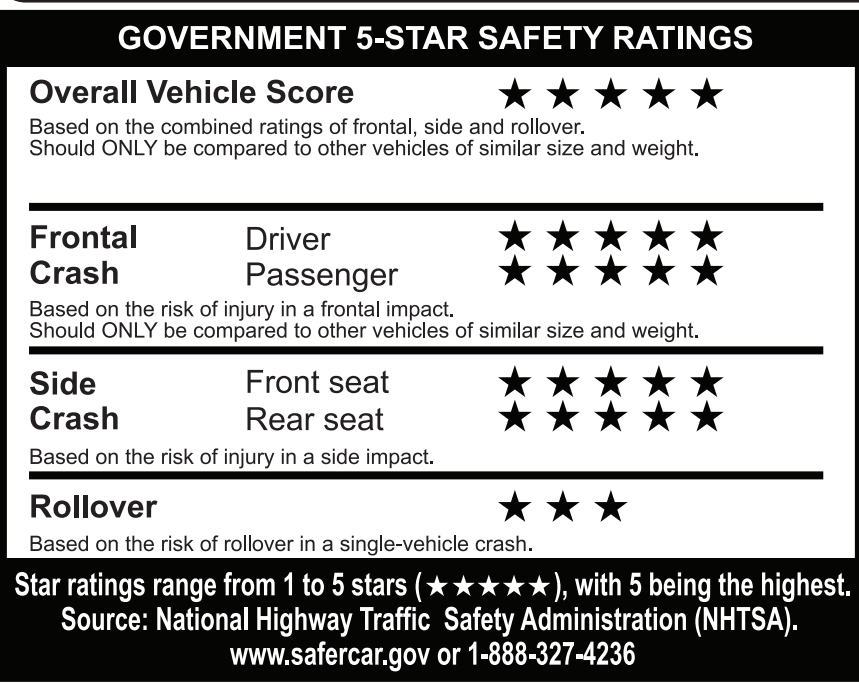
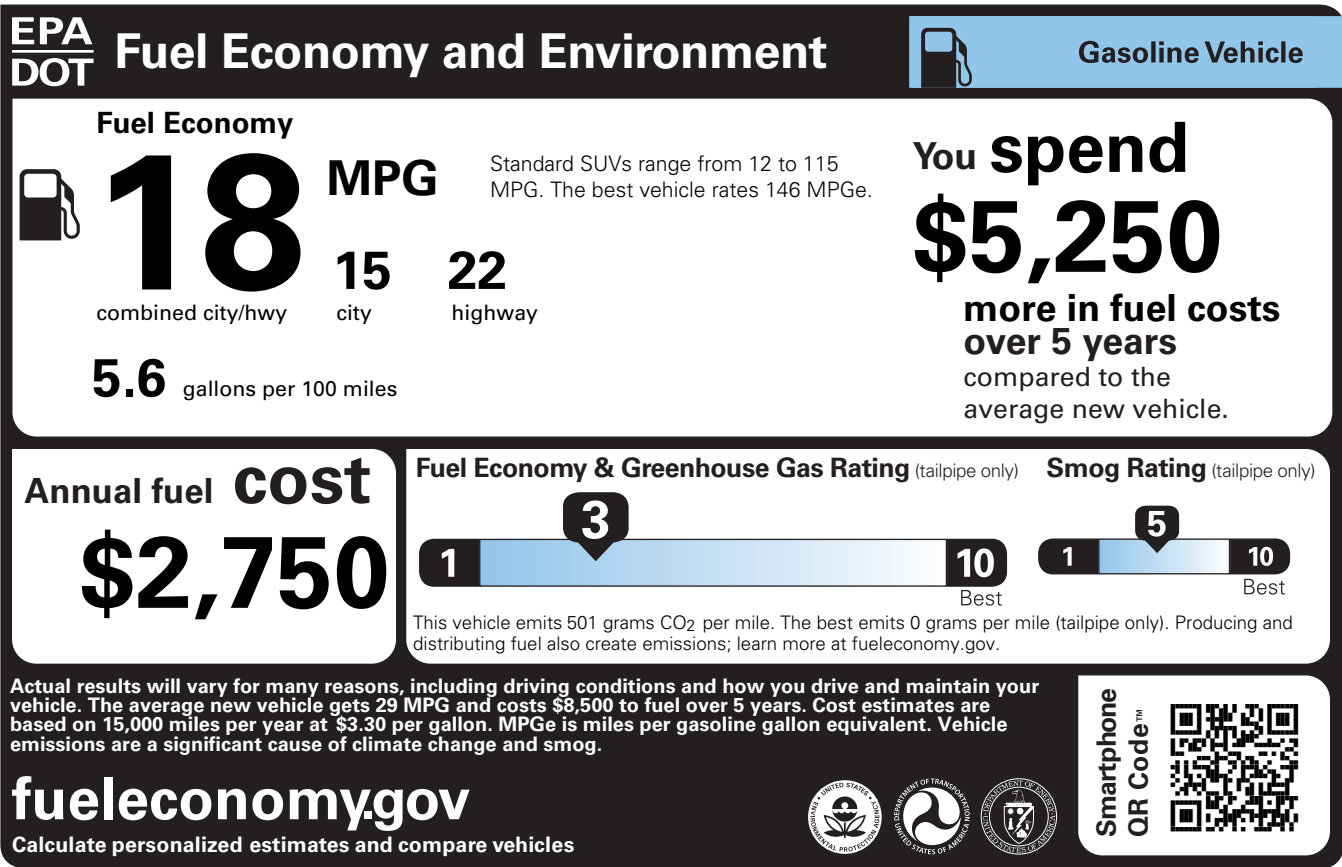


	<div>RAMP ONE</div> <div>RA84</div>	<div>TOTAL MSRP \$85,085.00</div> <div>Scan The QR Code to get more details about this vehicle</div> 
	<div>RAMP TWO</div> <div> <div>RAIL</div> <div>ITEM #: 72-021T O/T 2</div> </div>	
	<div>This label is affixed pursuant to the Federal Automobile Information Disclosure Act. Gasoline, License, and Title Fees, State and Local taxes are not included. Dealer installed options or accessories are not included unless listed above.</div>	
	<div>TA082 N RB 2X 625 000194 01 08 26</div>	



FordPass Connect™

Download the FordPass™ app* and you can:

Access Vehicle Control Features

- Remotely start, lock and unlock your vehicle.
- Locate your vehicle and check approximate fuel range.
- Receive vehicle health alerts.

Activate 4G LTE Wi-Fi Hotspot

- New vehicles include a 3-month or 3GB data (whichever comes first) Wi-Fi trial.
- Connect up to ten Wi-Fi-equipped devices.

*Compatible with select smartphone platforms. FordPass Connect™ service required (see App Terms for more information). Connected service and related feature functionality is subject to compatible AT&T network availability. Evolving technology/cellular networks may affect functionality and availability, or continued provision of some features, prohibiting them from functioning. Message and data rates may apply. See your local Ford website for our privacy policy.


The FordPass Connect™ modem is active and sending vehicle data (e.g., diagnostics) to Ford. See in-vehicle Settings for connectivity options.

 **Protect[®]**

Insist on Ford Protect! The only extended service plan fully backed by Ford and honored at every Ford dealership in the U.S., Canada and Mexico. See your Ford dealer or visit www.FordOwner.com.



Get Prequalified now at
www.ford.com/finance

 **WARNING:** Operating, servicing and maintaining a passenger vehicle, pickup truck, van, or off-road vehicle can expose you to chemicals including engine exhaust, carbon monoxide, phthalates, and lead, which are known to the State of California to cause cancer and birth defects or other reproductive harm. To minimize exposure, avoid breathing exhaust, do not idle the engine except as necessary, service your vehicle in a well-ventilated area and wear gloves or wash your hands frequently when servicing your vehicle. For more information go to www.P65Warnings.ca.gov/passenger-vehicle.