



ford.com

VEHICLE DESCRIPTION

EXPEDITION MAX

TE A25067

2026 EXPED. PLATINUM 4X4
PLATINUM 7-PASSENGER
3.5L H/O ECOBOOST V6
10SPD AUTO TRANS W/SLCTSHFT

EXTERIOR
STONE BLUE METALLIC
INTERIOR
SALT CRYSTAL LEATHER

STANDARD EQUIPMENT INCLUDED AT NO EXTRA CHARGE

EXTERIOR

- 360 DEGREE ZONE LIGHTING
- DOOR HANDLES - BODY COLOR
- EASY FUEL® CAPLESS FILLER
- FORD SPLIT GATE W/OPEN ON APPROACH
- HEAVY DUTY TRAILER TOW
- PANORAMIC VISTA ROOF®
- PRIVACY GLASS - REAR DOORS
- SIGNATURE GRILLE LIGHTING
- SIGNATURE TAIL LAMPS
- TRAILER SWAY CONTROL
- WIPERS - RAIN-SENSING

INTERIOR

- 1 TOUCH UP/DOWN DR/PASS WIN
- 2ND ROW HEATED SEATS
- 3RD ROW 40/20/40 FLEX SEAT W/ POWERFOLD
- AMBIENT LIGHTING
- CARGO MANAGEMENT SYSTEM
- FLEX POWERED CONSOLE
- HTD LTHR WRAPPED STR WHL W/CRUISE AND AUDIO CTRLS
- HTD/VENTILATED FRT SEATS
- MEMORY DRIVER SEAT
- TRI-ZONE AUTO CLIMATE CTRL

FUNCTIONAL

- 24" PANORAMIC DISPLAY
- 13.2" CENTER DISPLAY
- FORD APP
- HILL DESCENT CONTROL
- HILL START ASSIST
- INTELLIGENT 4WD SYSTEM
- PRO POWER ONBOARD™ - 400W
- REMOTE START W/ FORD APP
- TERRAIN MANAGEMENT SYSTEM W/ SELECTABLE DRIVE MODES
- TWO-SPEED TRANSFER CASE
- UNIVER GARAGE DOOR OPENER

SAFETY/SECURITY

- ADVANCETRAC™ WITH RSC®
- AIRBAGS - DUAL STAGE FRONT
- AIRBAGS - SAFETY CANOPY®
- AIRBAGS - SIDE IMPACT FRNT
- INDIV TIRE PRESS MONIT SYS
- LATCH CHILD SAFETY SYSTEM
- PERSONAL SAFETY SYSTEM™
- REAR OCCUPANT ALERT
- SECURE PKG 1 YR INCLUDED
- SECURILOCK® ANTI-THEFT SYS
- SOS POST-CRASH ALERT SYSTM™

WARRANTY

- 3YR/36,000 BUMPER / BUMPER
- 5YR/60,000 POWERTRAIN
- 5YR/60,000 ROADSIDE ASSIST

INCLUDED ON THIS VEHICLE

(MSRP)

EQUIPMENT GROUP 600A

OPTIONAL EQUIPMENT/OTHER

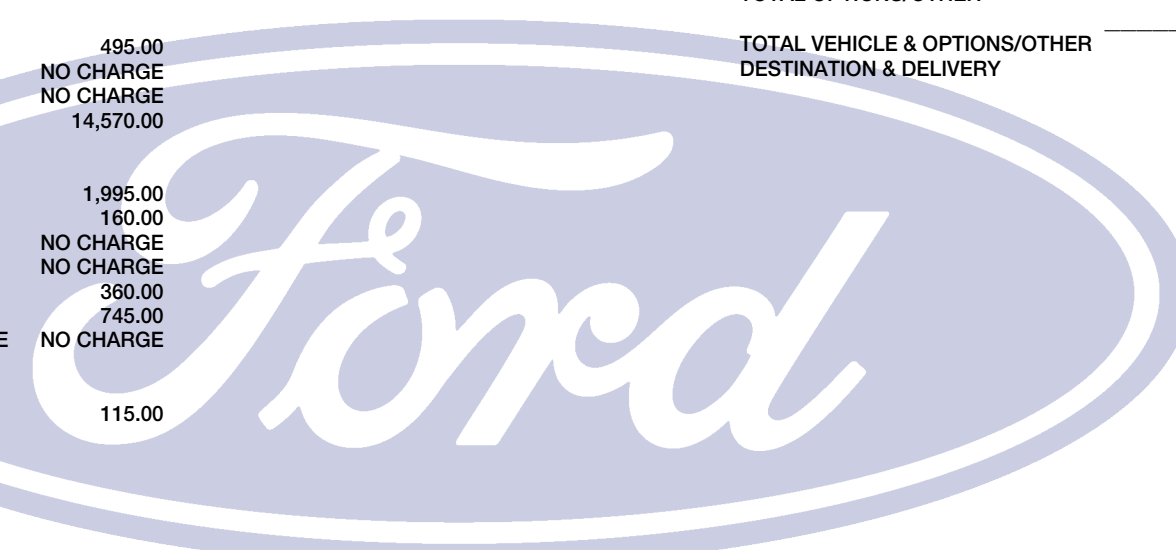
2026 MODEL YEAR	
STONE BLUE METALLIC	495.00
3.5L H/O ECOBOOST V6	NO CHARGE
FORD CO-PILOT360 ACTIVE 2.0	NO CHARGE
PLATINUM ULTIMATE PACKAGE	14,570.00
.P285/40R24 A/S BSW TIRES	
.24" TARNISHED DARK MCH ALM WH	
REAR SEAT ENTERTAINMENT	1,995.00
FLR LNERS RW 1&2 W/O CRPET MAT	160.00
BLUECRUISE EQUIP: 1YR+90D PLAN	NO CHARGE
DRIVER'S PACKAGE	NO CHARGE
CONSOLE VAULT	360.00
CONN PKG: 1 TIME 7YR	745.00
RUNNING BOARD-POWER DEPLOYABLE	NO CHARGE

DEALER INSTALLED OPTIONS

ALL WEATHER FL LNR/TRY STYL-3R	115.00
--------------------------------	--------

PRICE INFORMATION

BASE PRICE	\$77,250.00
TOTAL OPTIONS/OTHER	18,440.00
TOTAL VEHICLE & OPTIONS/OTHER	95,690.00
DESTINATION & DELIVERY	2,795.00



TOTAL MSRP \$98,485.00

Scan The QR Code to get more details about this vehicle



SPECIAL ORDER

TB241 N RB 2X 635 000712 02 24 26

This label is affixed pursuant to the Federal Automobile Information Disclosure Act. Gasoline, License, and Title Fees, State and Local taxes are not included. Dealer installed options or accessories are not included unless listed above.

EPA DOT Fuel Economy and Environment

Gasoline Vehicle

Fuel Economy

18 MPG
combined city/hwy

15 city
22 highway

5.6 gallons per 100 miles

Standard SUVs range from 12 to 115 MPG. The best vehicle rates 146 MPGe.

You spend \$5,250

more in fuel costs over 5 years compared to the average new vehicle.

Annual fuel cost \$2,750

Fuel Economy & Greenhouse Gas Rating (tailpipe only) Smog Rating (tailpipe only)



This vehicle emits 501 grams CO₂ per mile. The best emits 0 grams per mile (tailpipe only). Producing and distributing fuel also create emissions; learn more at fueleconomy.gov.

Actual results will vary for many reasons, including driving conditions and how you drive and maintain your vehicle. The average new vehicle gets 29 MPG and costs \$8,500 to fuel over 5 years. Cost estimates are based on 15,000 miles per year at \$3.30 per gallon. MPGe is miles per gasoline gallon equivalent. Vehicle emissions are a significant cause of climate change and smog.

fueleconomy.gov

Calculate personalized estimates and compare vehicles



GOVERNMENT 5-STAR SAFETY RATINGS

Overall Vehicle Score ★★★★★

Based on the combined ratings of frontal, side and rollover. Should ONLY be compared to other vehicles of similar size and weight.

Frontal Crash	Driver Passenger	★★★★★
---------------	------------------	-------

Based on the risk of injury in a frontal impact. Should ONLY be compared to other vehicles of similar size and weight.

Side Crash	Front seat Rear seat	★★★★★
------------	----------------------	-------

Based on the risk of injury in a side impact.

Rollover	★★★★
----------	------

Based on the risk of rollover in a single-vehicle crash.

Star ratings range from 1 to 5 stars (★★★★★), with 5 being the highest.

Source: National Highway Traffic Safety Administration (NHTSA).

www.safercar.gov or 1-888-327-4236

1FMJK1MG3TEA25067



WARNING: Operating, servicing and maintaining a passenger vehicle, pickup truck, van, or off-road vehicle can expose you to chemicals including engine exhaust, carbon monoxide, phthalates, and lead, which are known to the State of California to cause cancer and birth defects or other reproductive harm. To minimize exposure, avoid breathing exhaust, do not idle the engine except as necessary, service your vehicle in a well-ventilated area and wear gloves or wash your hands frequently when servicing your vehicle. For more information go to www.P65Warnings.ca.gov/passenger-vehicle.

FordPass Connect™

Download the FordPass™ app* and you can:

- Access Vehicle Control Features**
- Remotely start, lock and unlock your vehicle.
 - Locate your vehicle and check approximate fuel range.
 - Receive vehicle health alerts.

- Activate 4G LTE Wi-Fi Hotspot**
- New vehicles include a 3-month or 3GB data (whichever comes first) Wi-Fi trial.
 - Connect up to ten Wi-Fi-equipped devices.

*Compatible with select smartphone platforms. FordPass Connect™ service required (see App Terms for more information). Connected service and related feature functionality is subject to compatible AT&T network availability. Evolving technology/cellular networks may affect functionality and availability, or continued provision of some features, prohibiting them from functioning. Message and data rates may apply. See your local Ford website for our privacy policy.

The FordPass Connect™ modem is active and sending vehicle data (e.g., diagnostics) to Ford. See in-vehicle Settings for connectivity options.



Insist on Ford Protect! The only extended service plan fully backed by Ford and honored at every Ford dealership in the U.S., Canada and Mexico. See your Ford dealer or visit www.FordOwner.com.



Get Prequalified now at www.ford.com/finance