



ford.com

VEHICLE DESCRIPTION

EXPEDITION

2027 EXPED. PLATINUM 4X2
PLATINUM 7-PASSENGER
3.5L ECOBOOST V6 ENGINE
10SPD AUTO TRANS W/SLCTSHFT

VE A00742

EXTERIOR
GLACIER GRAY MET TRI-COAT
INTERIOR
BLACK ONYX LTHR-TRIMMED

STANDARD EQUIPMENT INCLUDED AT NO EXTRA CHARGE

EXTERIOR

- 360 DEGREE ZONE LIGHTING
- DOOR HANDLES - BODY COLOR
- EASY FUEL® CAPLESS FILLER
- FORD SPLIT GATE W/OPEN ON APPROACH
- PRIVACY GLASS - REAR DOORS
- SIGNATURE TAIL LAMPS
- TRAILER SWAY CONTROL
- WIPERS - RAIN-SENSING

INTERIOR

- 1 TOUCH UP/DOWN DR/PASS WIN
- 2ND ROW HEATED SEATS
- 3RD ROW 40/20/40 FLEX SEAT W/ POWERFOLD
- AMBIENT LIGHTING
- FLEX POWERED CONSOLE
- HTD LTHR WRAPPED STR WHL W/CRUISE AND AUDIO CTRLS
- HTD/VENTILATED FRT SEATS
- MEMORY DRIVER SEAT
- TRI-ZONE AUTO CLIMATE CTRL

FUNCTIONAL

- 13.2" CENTER DISPLAY
- 24" PANORAMIC DISPLAY
- FORD APP
- HILL START ASSIST
- PRO POWER ONBOARD™ - 400W
- REMOTE START W/ FORD APP
- UNIVER GARAGE DOOR OPENER

SAFETY/SECURITY

- ADVANCETRAC™ WITH RSC®
- AIRBAGS - DUAL STAGE FRONT
- AIRBAGS - SAFETY CANOPY®
- AIRBAGS - SIDE IMPACT FRNT
- INDIV TIRE PRESS MONIT SYS
- LATCH CHILD SAFETY SYSTEM
- PERIMETER ALARM
- PERSONAL SAFETY SYSTEM™
- REAR OCCUPANT ALERT
- SOS POST-CRASH ALERT SYS™

WARRANTY

- 3YR/36,000 BUMPER / BUMPER
- 5YR/60,000 POWERTRAIN
- 5YR/60,000 ROADSIDE ASSIST

INCLUDED ON THIS VEHICLE

(MSRP)

EQUIPMENT GROUP 600A

OPTIONAL EQUIPMENT/OTHER

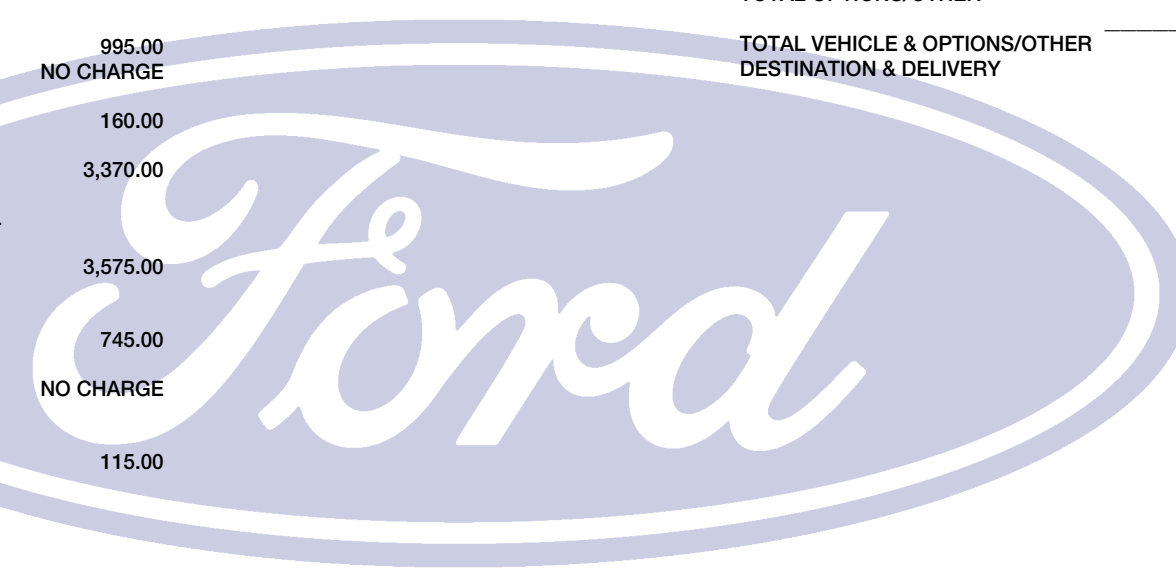
2027 MODEL YEAR	
GLACIER GRAY MET TRI-COAT	995.00
FORD CO-PILOT360 ACTIVE 2.0	NO CHARGE
.DRIVER-FACING CAMERA	
FLR LNERS RW 1&2 W/O CRPET MAT	160.00
BLUECRUISE EQUIP: 90 DAY TRIAL	
DRIVER'S PACKAGE	3,370.00
.PANORAMIC VISTA ROOF	
.RUNNING BOARD-POWER DEPLOYABL	
.WIRELESS CHARGING PAD	
STEALTH APPEARANCE PACKAGE	3,575.00
.P275/50R22 A/S BSW TIRES	
.22" MAGNETITE PAINT ALM WHEEL	
CONN PKG: 1 TIME 7YR	745.00
SECURITY PACKAGE: 1 YR INCL	
FRONT LICENSE PLATE BRACKET	NO CHARGE

DEALER INSTALLED OPTIONS

ALL WEATHER FLR LINER 3RD ROW	115.00
-------------------------------	--------

PRICE INFORMATION

BASE PRICE	\$70,550.00
TOTAL OPTIONS/OTHER	8,960.00
TOTAL VEHICLE & OPTIONS/OTHER	79,510.00
DESTINATION & DELIVERY	2,795.00



RAMP ONE	
RK34	
RAMP TWO	
RAIL	
ITEM #:	52-1141 O/T 1

TOTAL MSRP \$82,305.00

Scan The QR Code to get more details about this vehicle



This label is affixed pursuant to the Federal Automobile Information Disclosure Act. Gasoline, License, and Title Fees, State and Local taxes are not included. Dealer installed options or accessories are not included unless listed above.

SPECIAL ORDER
TF091 N RB 2X 720 000678 06 09 26

EPA DOT Fuel Economy and Environment

Gasoline Vehicle

Fuel Economy

18 MPG
combined city/hwy city highway

16 23

5.6 gallons per 100 miles

Standard SUVs range from 13 to 115 MPG. The best vehicle rates 146 MPGe.

You spend \$5,000

more in fuel costs over 5 years compared to the average new vehicle.

Annual fuel cost \$2,600

Fuel Economy & Greenhouse Gas Rating (tailpipe only) Smog Rating (tailpipe only)



This vehicle emits 481 grams CO₂ per mile. The best emits 0 grams per mile (tailpipe only). Producing and distributing fuel also create emissions; learn more at fueleconomy.gov.

Actual results will vary for many reasons, including driving conditions and how you drive and maintain your vehicle. The average new vehicle gets 29 MPG and costs \$8,000 to fuel over 5 years. Cost estimates are based on 15,000 miles per year at \$3.10 per gallon. MPGe is miles per gasoline gallon equivalent. Vehicle emissions are a significant cause of climate change and smog.

fueleconomy.gov

Calculate personalized estimates and compare vehicles



Smartphone QR Code™



GOVERNMENT 5-STAR SAFETY RATINGS

Overall Vehicle Score ★★★★★

Based on the combined ratings of frontal, side and rollover. Should ONLY be compared to other vehicles of similar size and weight.

Frontal Crash	Driver Passenger	★★★★★
---------------	------------------	-------

Based on the risk of injury in a frontal impact. Should ONLY be compared to other vehicles of similar size and weight.

Side Crash	Front seat Rear seat	★★★★★
------------	----------------------	-------

Based on the risk of injury in a side impact.

Rollover		★★★
----------	--	-----

Based on the risk of rollover in a single-vehicle crash.

Star ratings range from 1 to 5 stars (★★★★★), with 5 being the highest.

Source: National Highway Traffic Safety Administration (NHTSA).

www.safercar.gov or 1-888-327-4236

1FMJU1L81VEA00742



WARNING: Operating, servicing and maintaining a passenger vehicle, pickup truck, van, or off-road vehicle can expose you to chemicals including engine exhaust, carbon monoxide, phthalates, and lead, which are known to the State of California to cause cancer and birth defects or other reproductive harm. To minimize exposure, avoid breathing exhaust, do not idle the engine except as necessary, service your vehicle in a well-ventilated area and wear gloves or wash your hands frequently when servicing your vehicle. For more information go to www.P65Warnings.ca.gov/passenger-vehicle.

Download the Ford app

Connect your Ford with your phone™

- Available Remote Features
- Remote Start, Lock and Unlock
 - GPS Location
 - Phone As A Key
 - Vehicle Health Monitoring

More From the App

- Schedule Vehicle Service
- Set Preferred Dealer
- Access Ford Credit & Ford Rewards
- Manage Over-The-Air Software Updates

THE FORD APP, FORMERLY KNOWN AS FORDPASS® APP, IS COMPATIBLE WITH SELECT SMARTPHONE PLATFORMS. IS AVAILABLE VIA A DOWNLOAD MESSAGE AND DATA RATES MAY APPLY. TERMS AND CONDITIONS APPLY. VISIT FORD.COM FOR OUR PRIVACY NOTICE.

*Disclaimer: Remote features may vary by model. An activated vehicle modem, and the Ford app are required for remote features. Evolving technology/cellular networks/vehicle capability may limit or prevent functionality. The modem is active and sending vehicle data (e.g., diagnostics) to Ford. See in-vehicle Settings for connectivity options. Terms and conditions apply. Visit ford.com for our privacy notice.



Insist on Ford Protect! The only extended service plan fully backed by Ford and honored at every Ford dealership in the U.S., Canada and Mexico. See your Ford dealer or visit www.FordOwner.com.



Get Prequalified now at www.ford.com/finance